



EASTWEST
HOMES

HOUSE & LAND
PACKAGE

A



\$520,500*

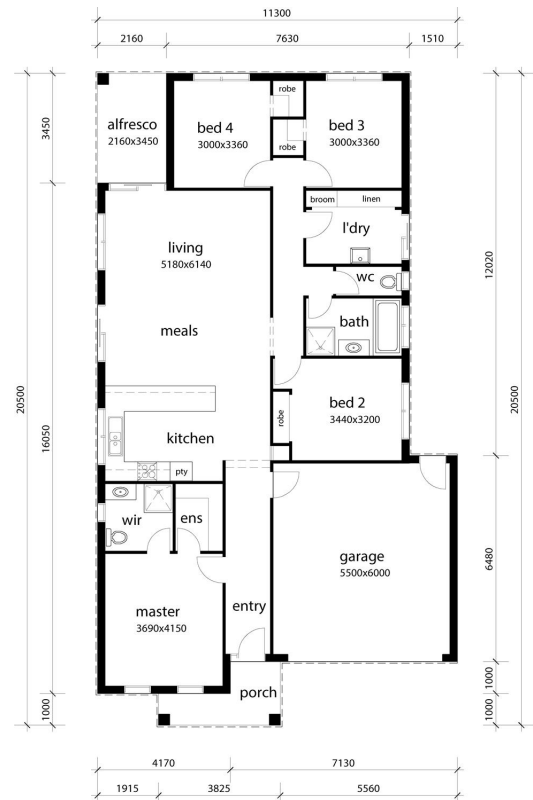
HOUSE & LAND PACKAGE

Lot 125 Somerset Street (350m²)
OFFICER

The Drysdale 21 (200.4m²)

- Austral bricks & Boral roof tiles;
- Stoddart sectional garage door w/ 2 remotes;
- Bradnam's aluminium windows;
- Corinthian feature entry door;
- 4 bedrooms with BIR;
- Designer kitchen w/ 600mm appliances;
- Open plan meals / living;
- Elegance floor tiles & Carpet Call carpet;
- Braemer 3.7 Star ducted heating;
- TV point & data point;
- Double bowl kitchen sink;
- Stylus whiteware, tapware & accessories;
- + more!

Christine Logan - 0400 514 248



*Price is subject to soil test, site survey and developer approval.

All Images are for illustrative purposes only. Please contact Christine Logan for exact specifications and included features.