



HOME AND LAND

Images shown are for illustrative purposes only and may not represent the final product such as lighting, window furnishings, timber look garage door & timber windows. Façade details including entry door and window sizing may vary between house types. Pricing also excludes features such as fencing, landscaping, letterbox, decking, driveway and any notable features of the façade. Please speak with your sales consultant for further details.

LOT 111, SKYMONT ESTATE, OFFICER (350M2)

FLOOR PLAN: AVALON 3512
FACADE: PLYMOUTH

FROM*

\$660,964

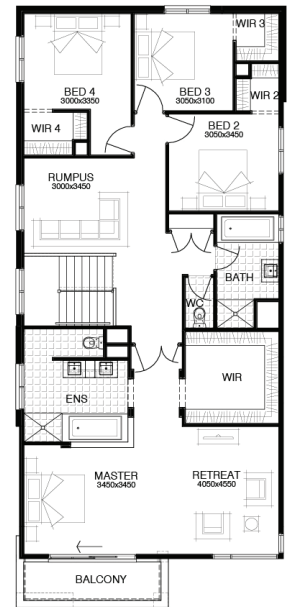
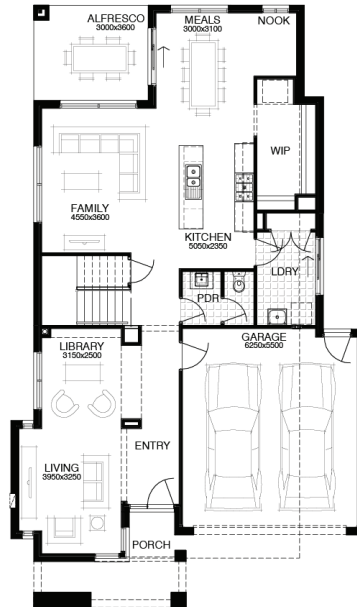
4 🚗 2 🍷 2 🚗 5 🛋️ 35sq 📏

FIRST HOME OWNERS PRICE \$650,964

\$17,000
OF PROMOTION OPTIONS INCLUDED*

PACKAGE INCLUSIONS:

- ▶ WELLNESS - DARWIN ESSENTIALS PACK
- ▶ DEVELOPER & COUNCIL REQS
- ▶ UP TO 40M2 OF 100MM COLOURED THROUGH CONCRETE
- ▶ SECTIONAL LIFT GARAGE DOOR WITH REMOTE
- ▶ 3 COAT PAINT APPLICATION
- ▶ BRICK INFILLS ABOVE WINDOWS
- ▶ UP TO 100M2(SS) CAT 1 OR 180M2(DS) CAT 2 CARPET, AND 50M2 PERFECT TIMBER FLOORING LAMINATE
- ▶ TECHNIKA 900MM STAINLESS STEEL APPLIANCES



For enquiries please contact:
Donna Iliadis
0431 205 952
Simonds.com.au

Metro East
VIC
Donna.Iliadis@simonds.com.au

*From pricing is based on standard plan, builders preferred siting, site costs allowance, and is subject to extreme site changes beyond our reasonable control and unknown at the time of print. All packages are subject to Developer and Council approval. Package Price does not include stamp duty, government, legal or bank charges. Community Infrastructure Levy and Asset Protection Permit are not included in pricing and is to be arranged by the client directly with the Developer (if applicable). Any alterations may incur additional charges. Confirm land price and availability prior to purchase. Simonds reserves the right to withdraw or amend pricing, inclusions and promotion at any time without notice. Please refer to the terms and conditions for the Lifetime Structural Guarantee at www.simonds.com.au/terms-and-conditions. This package applies to VIC New Living range only. Please speak with your sales consultant for further details. Pricing is current at 14/11/2018.